

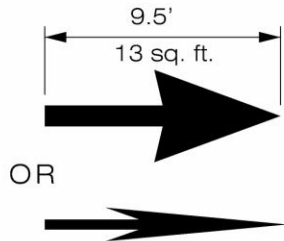
Notes:

Triangle length is equal to 1.5 times the base dimension.

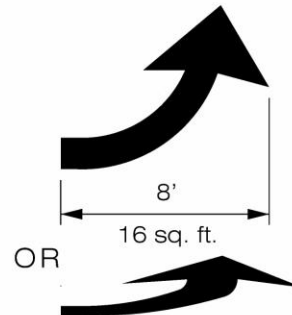
Yield lines may be smaller than suggested when installed on much narrower, slow-speed facilities such as shared-use paths

Figure 16
Yield Line Markings

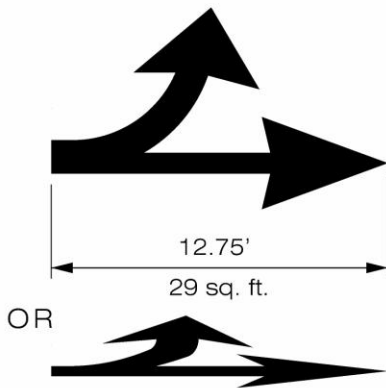
a. Through Lane-Use Arrow



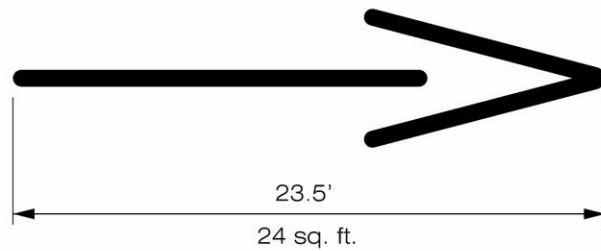
b. Turn Lane-Use Arrow



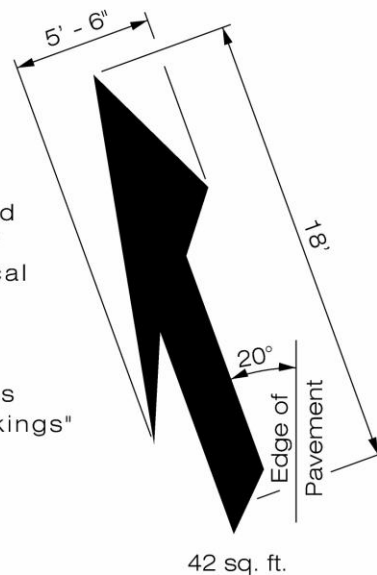
c. Turn and Through Lane-Use Arrow



d. Wrong-Way Arrow



e. Lane-Reduction Arrow



Notes:

1. Typical sizes for normal installation; sizes may be reduced approximately one-third for low-speed urban conditions; larger sizes may be needed for freeways, above average speeds, and other critical locations.
2. The narrow elongated arrow designs shown in Drawings A, B, and C are optional.
3. For proper proportion, see the Pavement Markings chapter of the "Standard Highway Signs and Markings" book (see Section 1A.11).

Figure 19
Typical Lane - Use, Lane - Reduction, and Warning Arrows

- * Optional
- If used, minimum of two arrows to be installed
- ** Mandatory if trap lane condition exists
- *** Recommended if trap lane condition exists
- 1 Supplement with signs

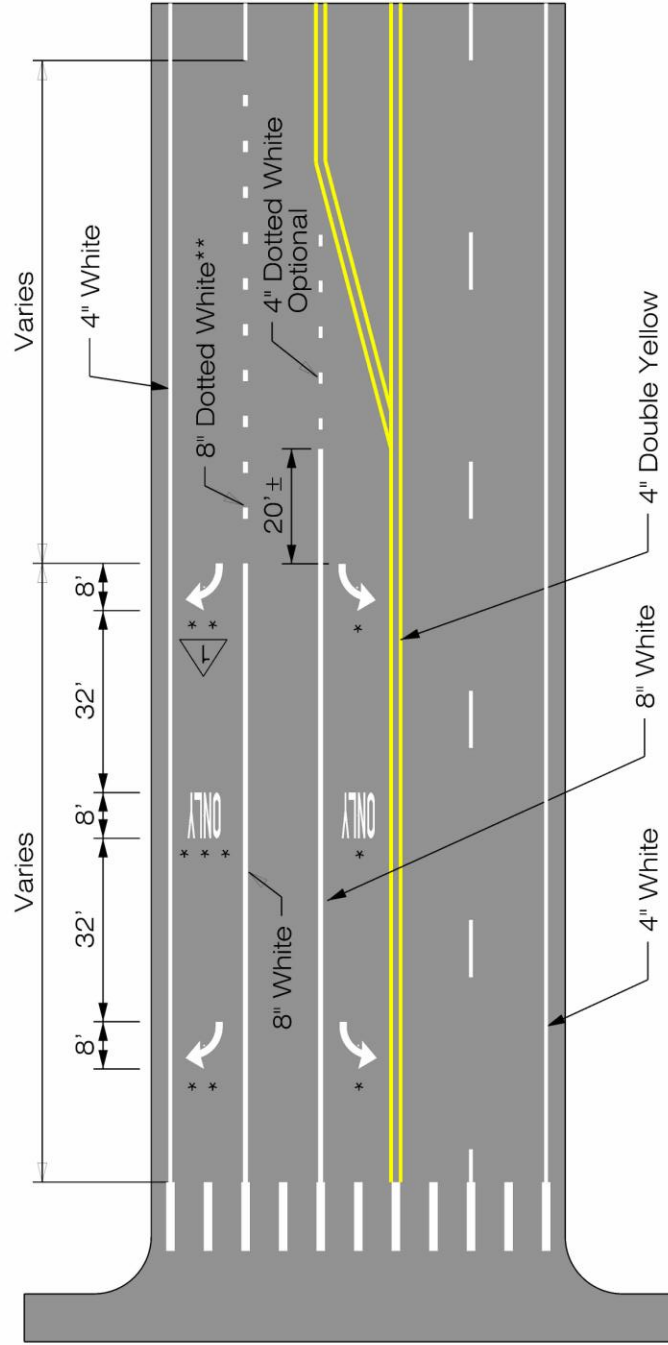
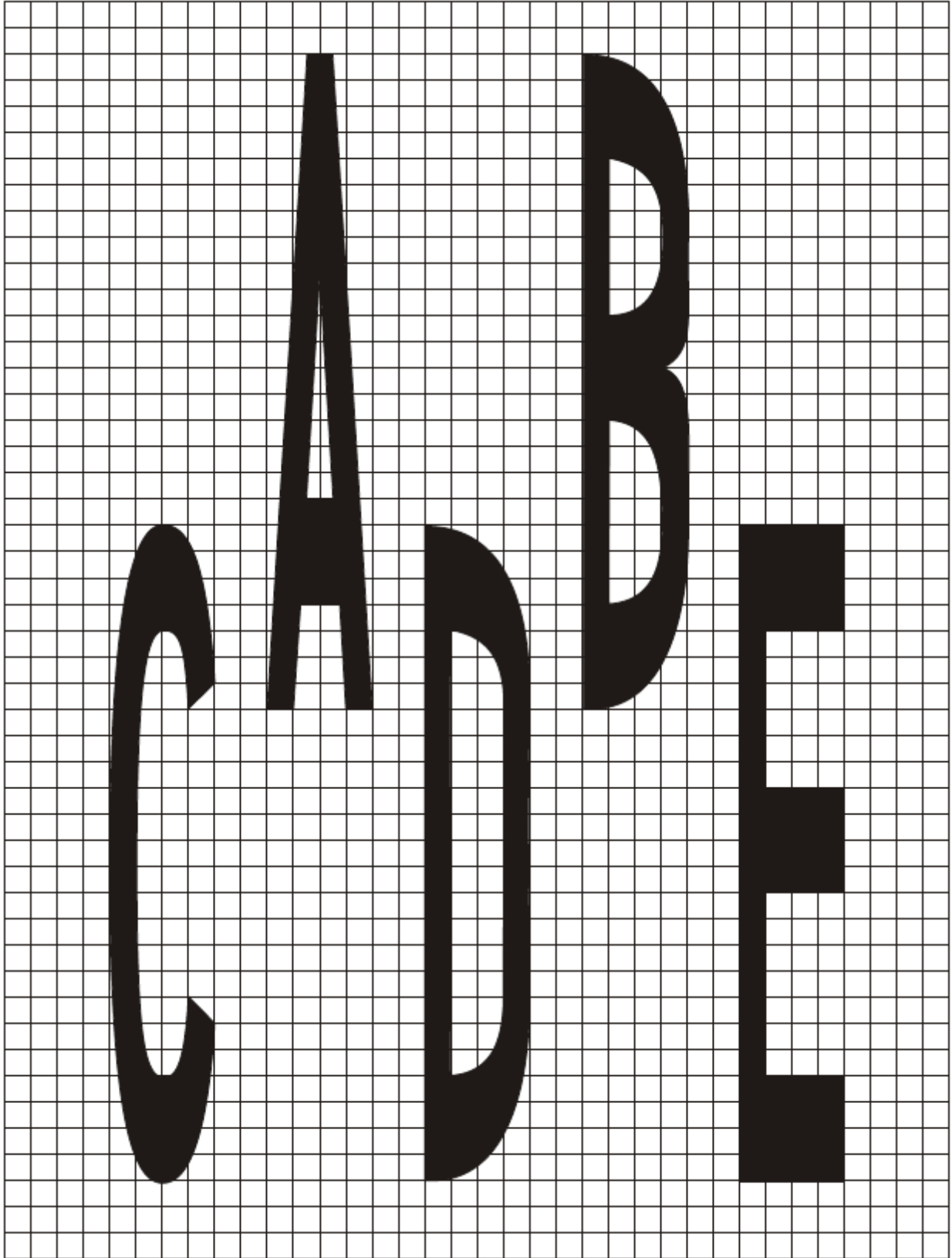
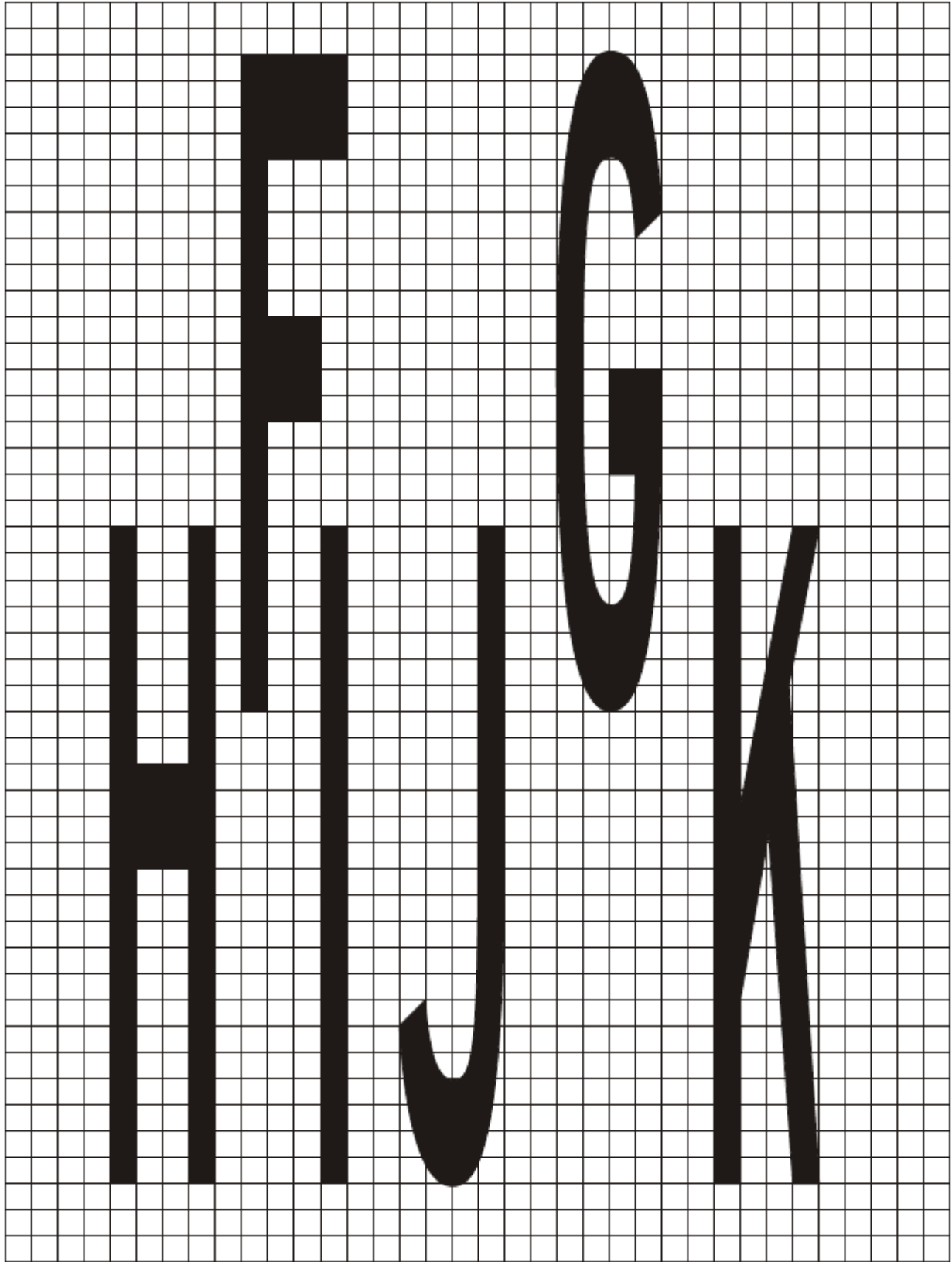
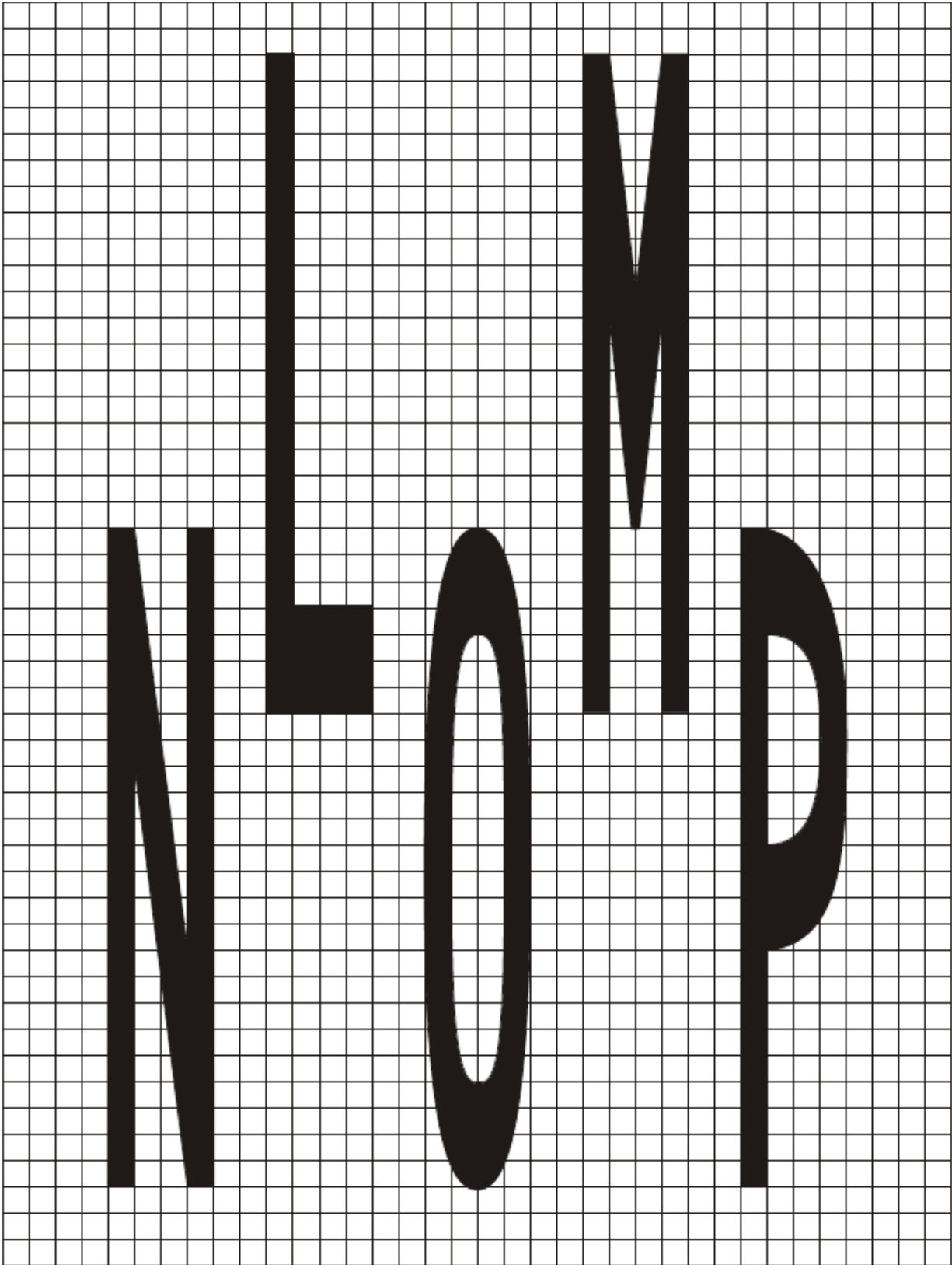
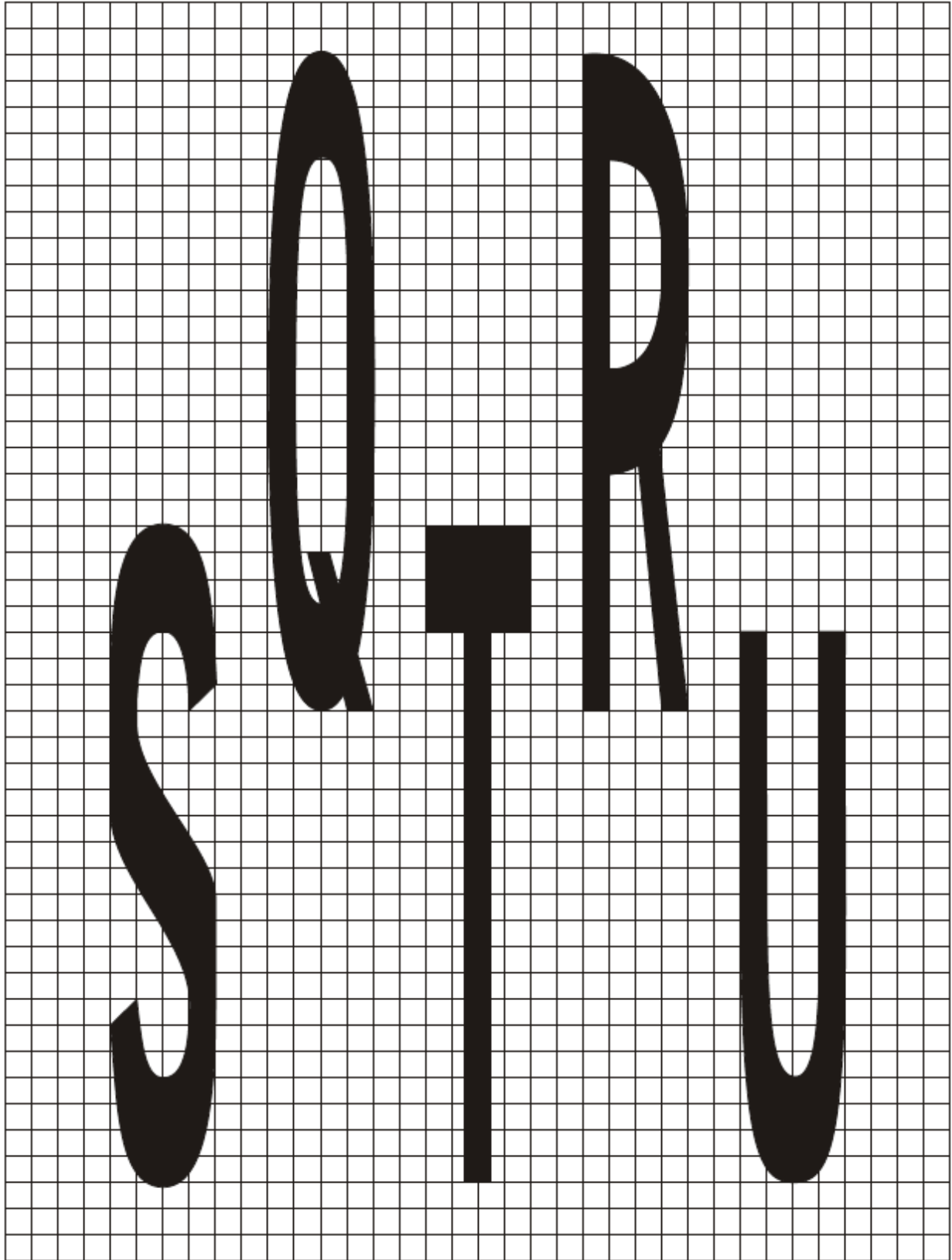


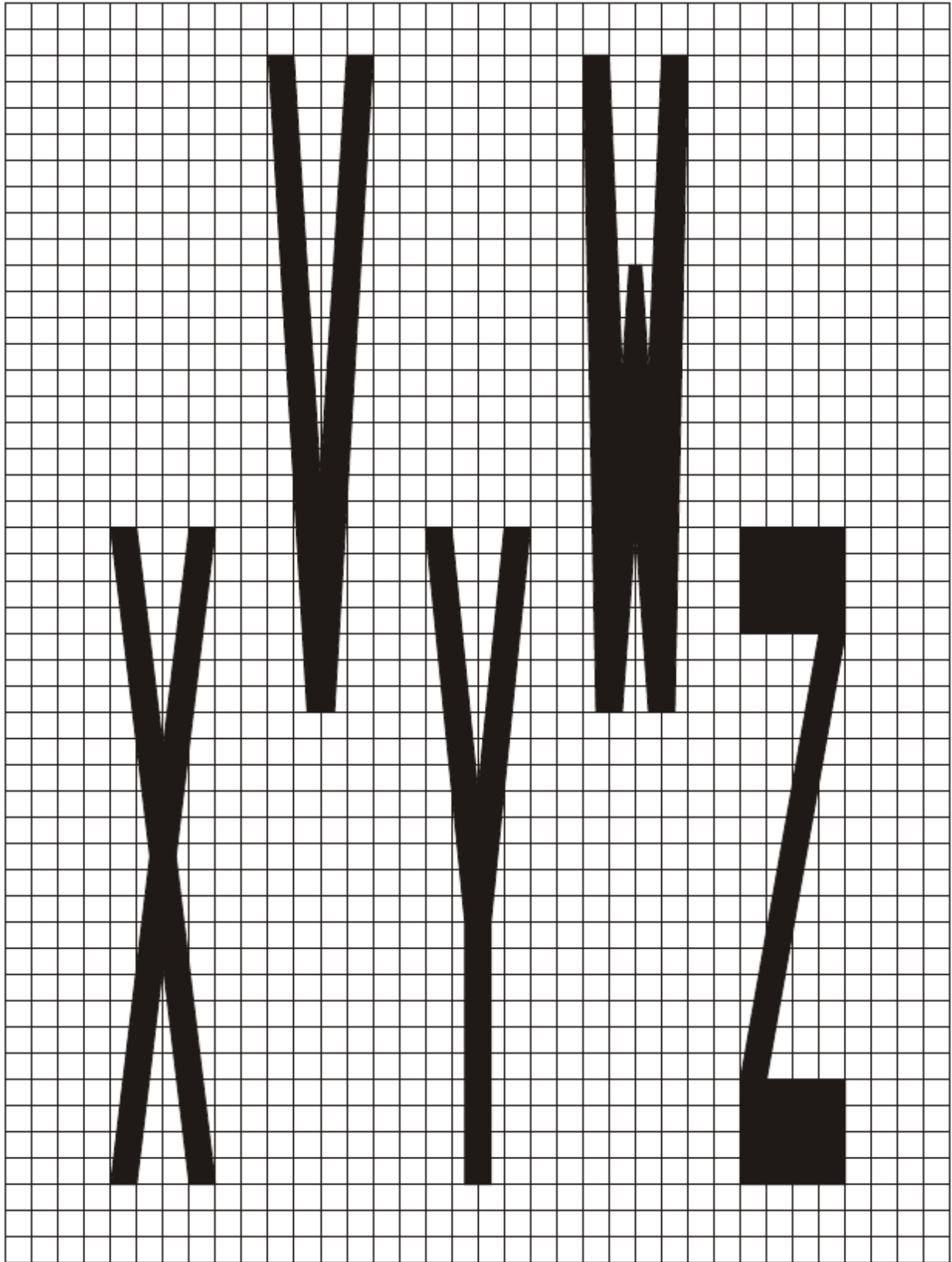
Figure 20
Typical Word & Symbol Markings

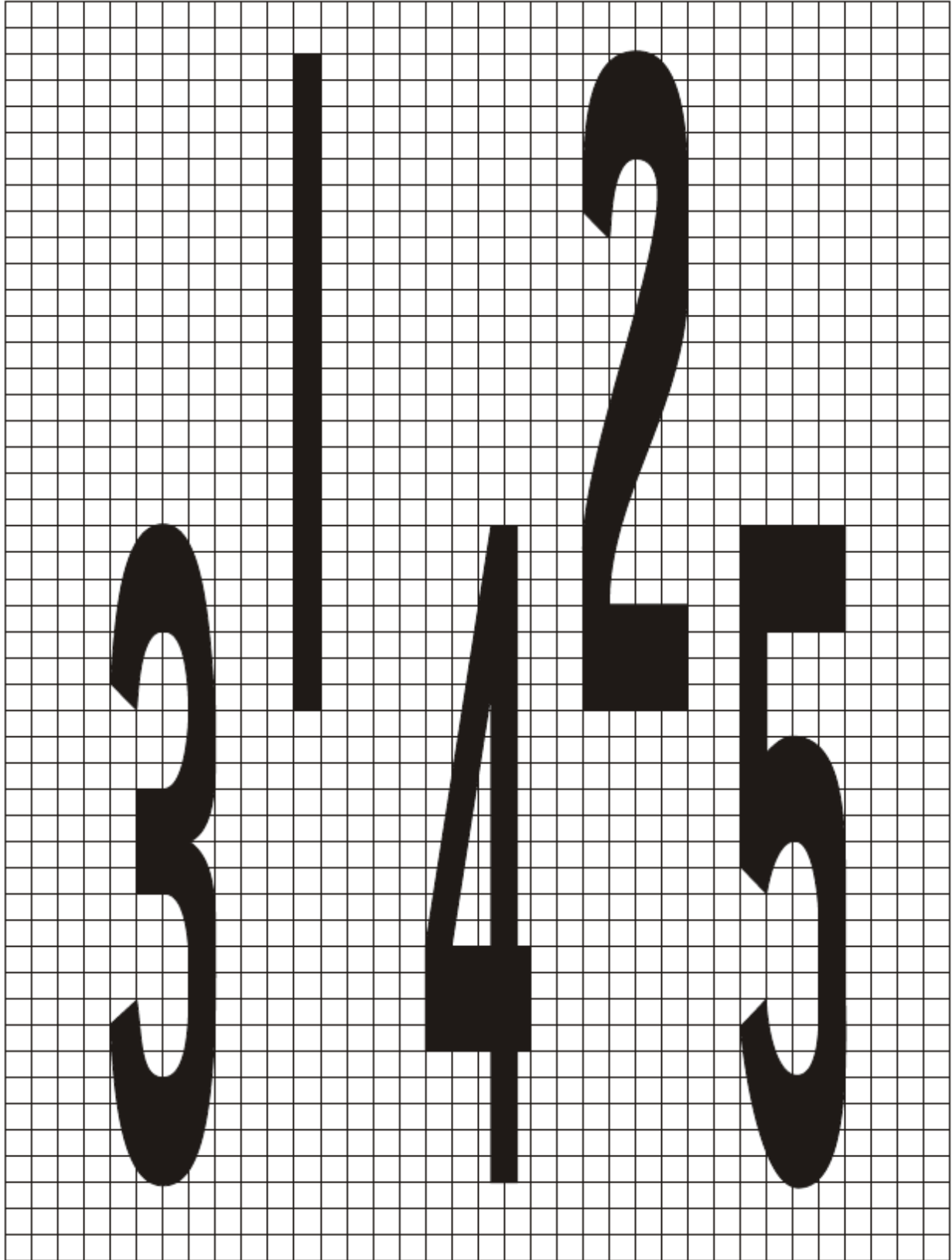


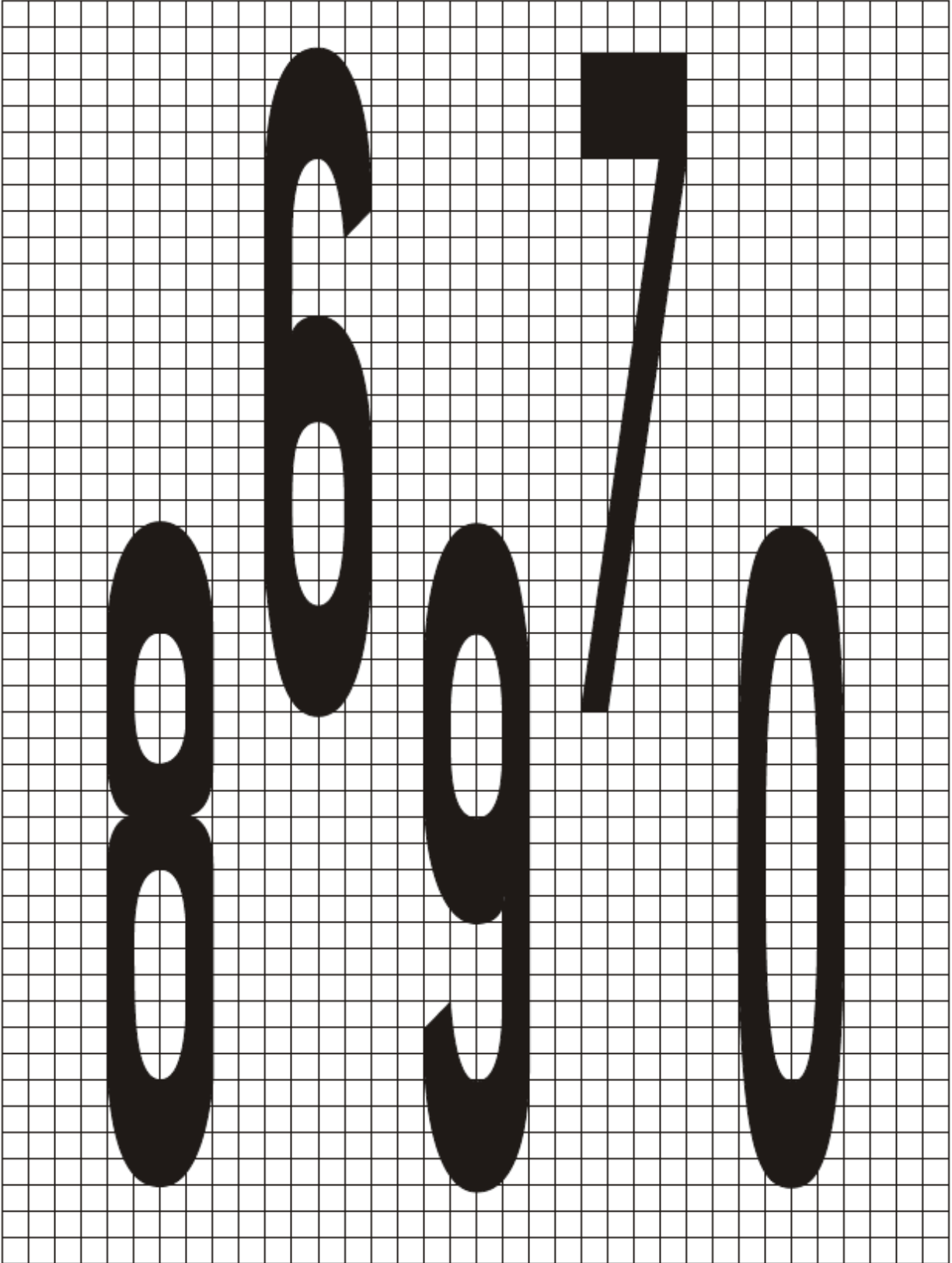


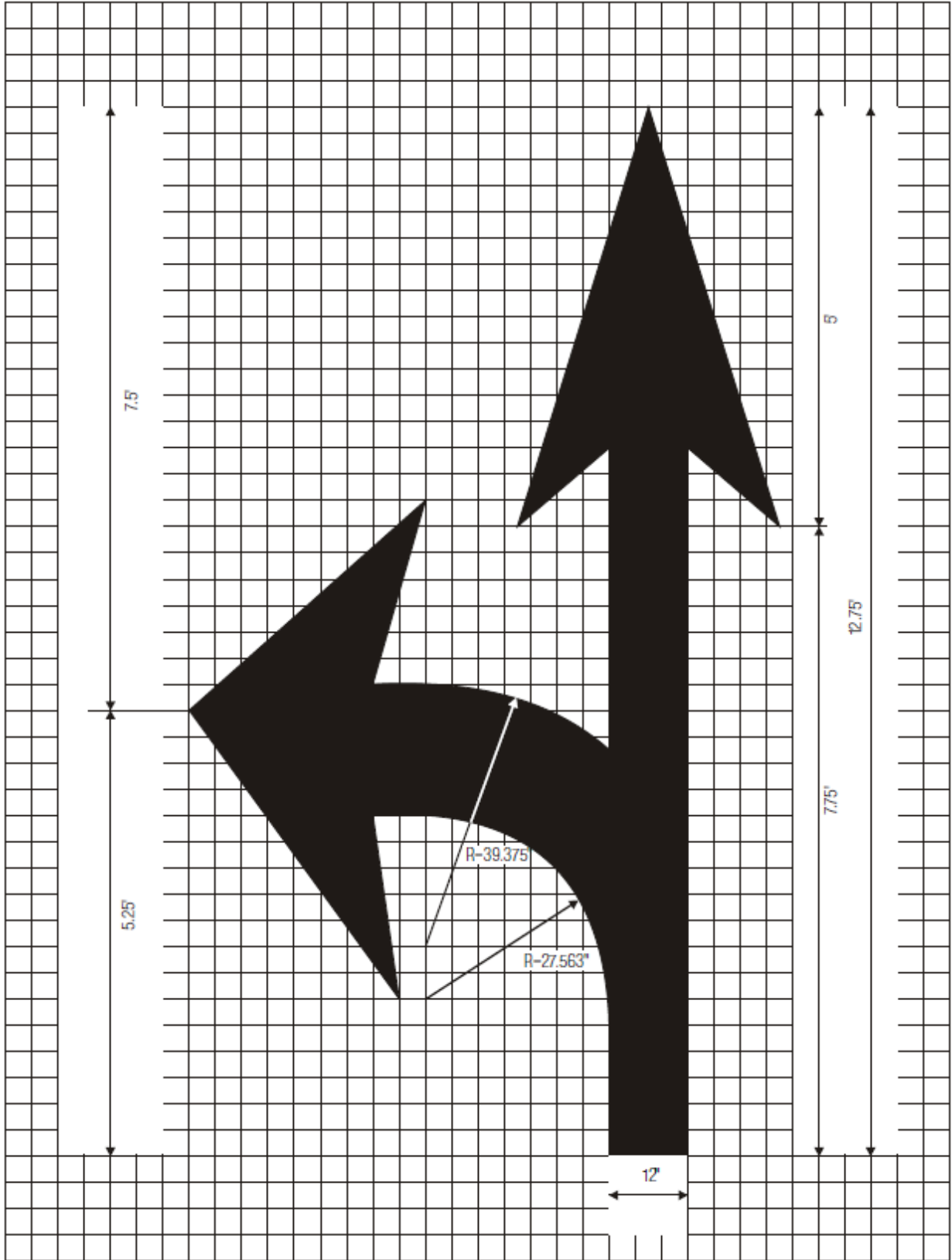


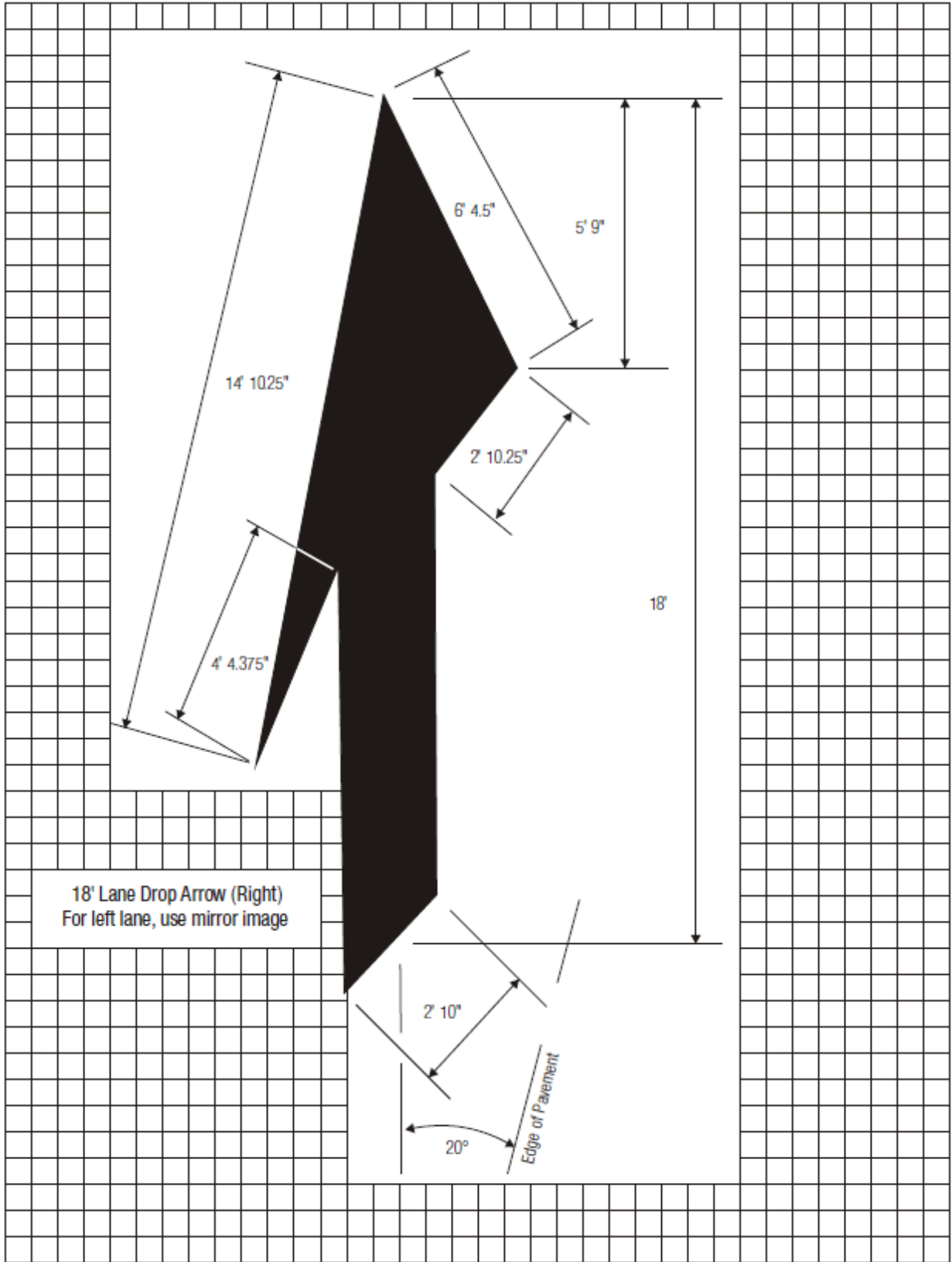


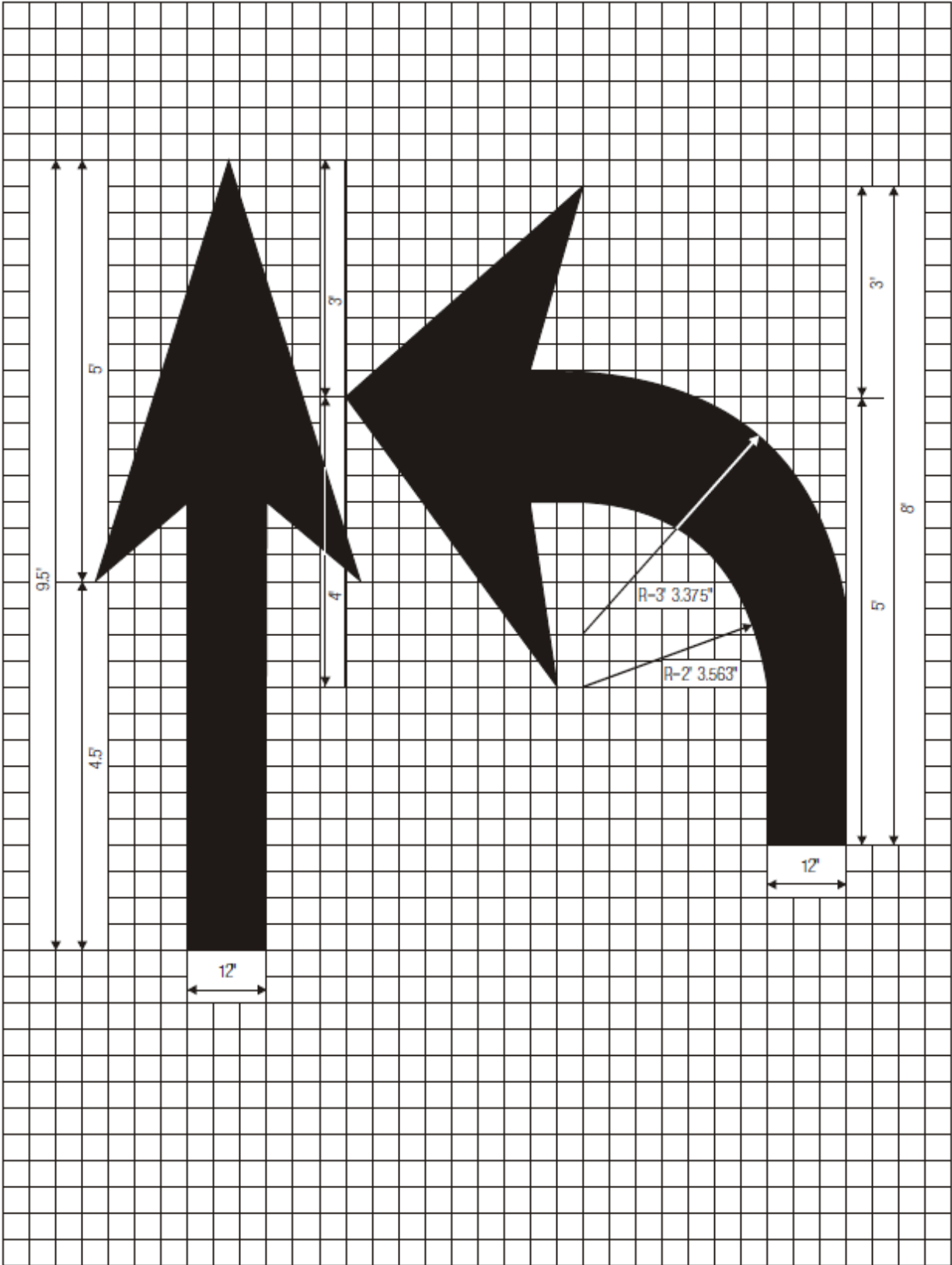


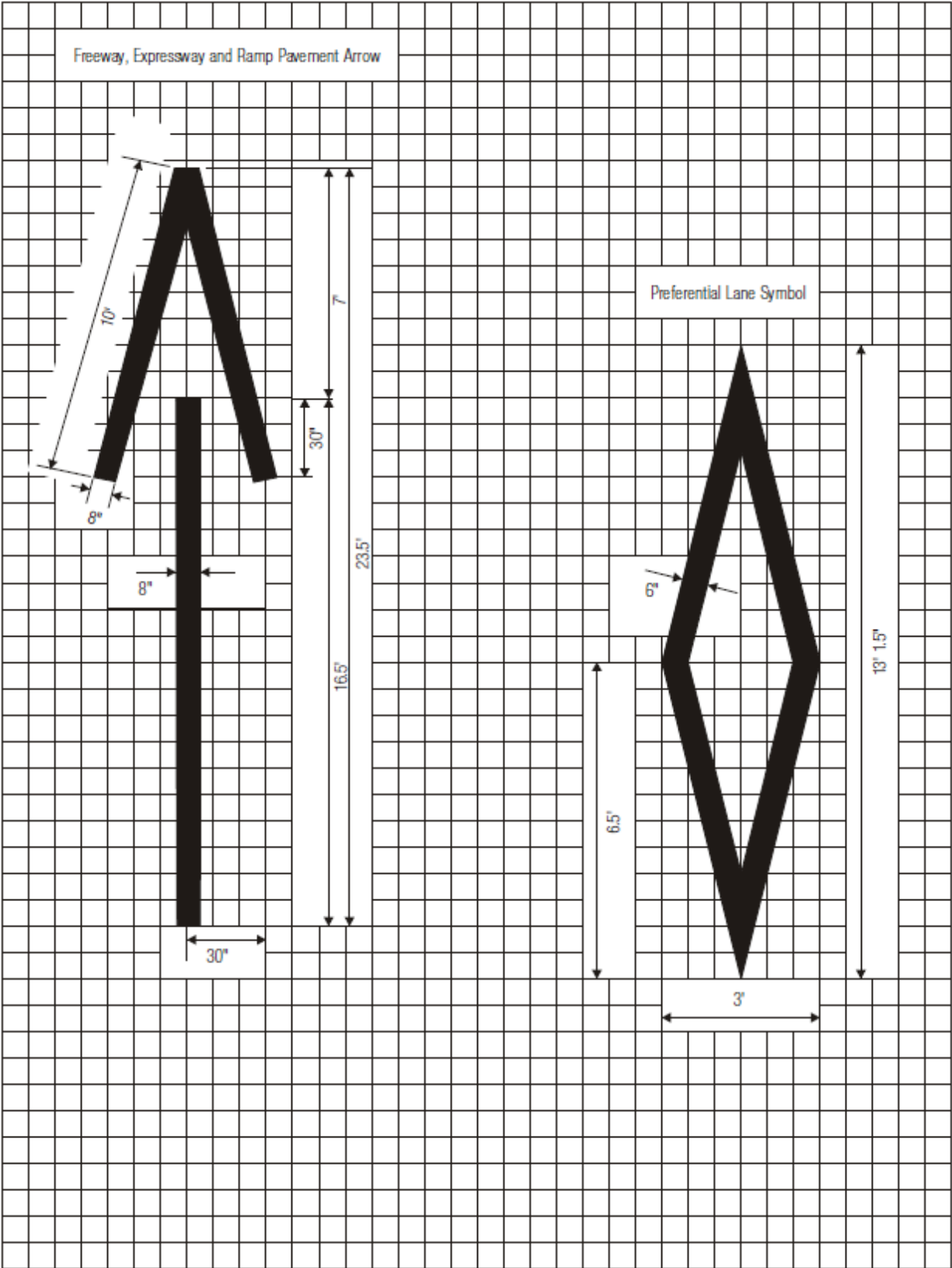


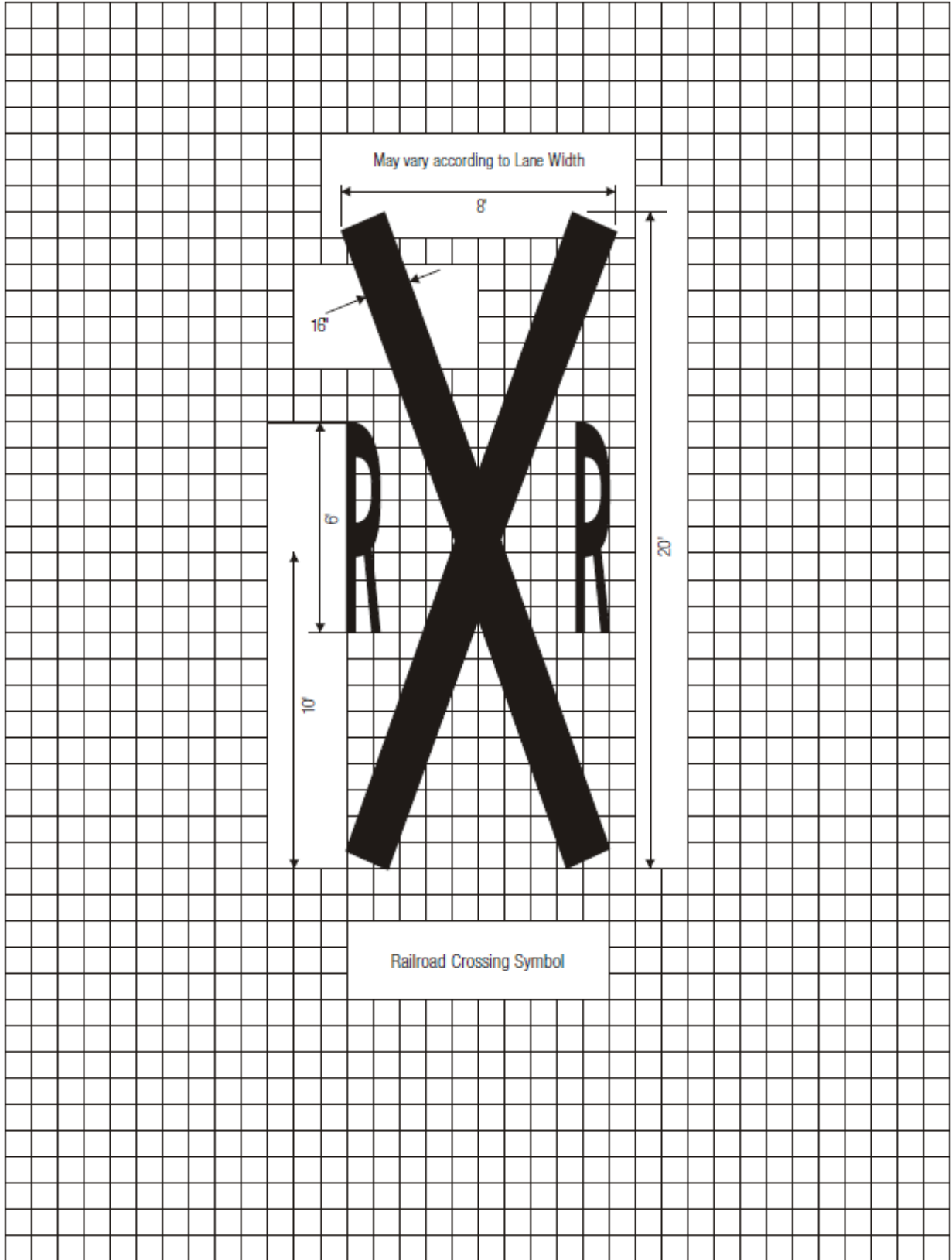


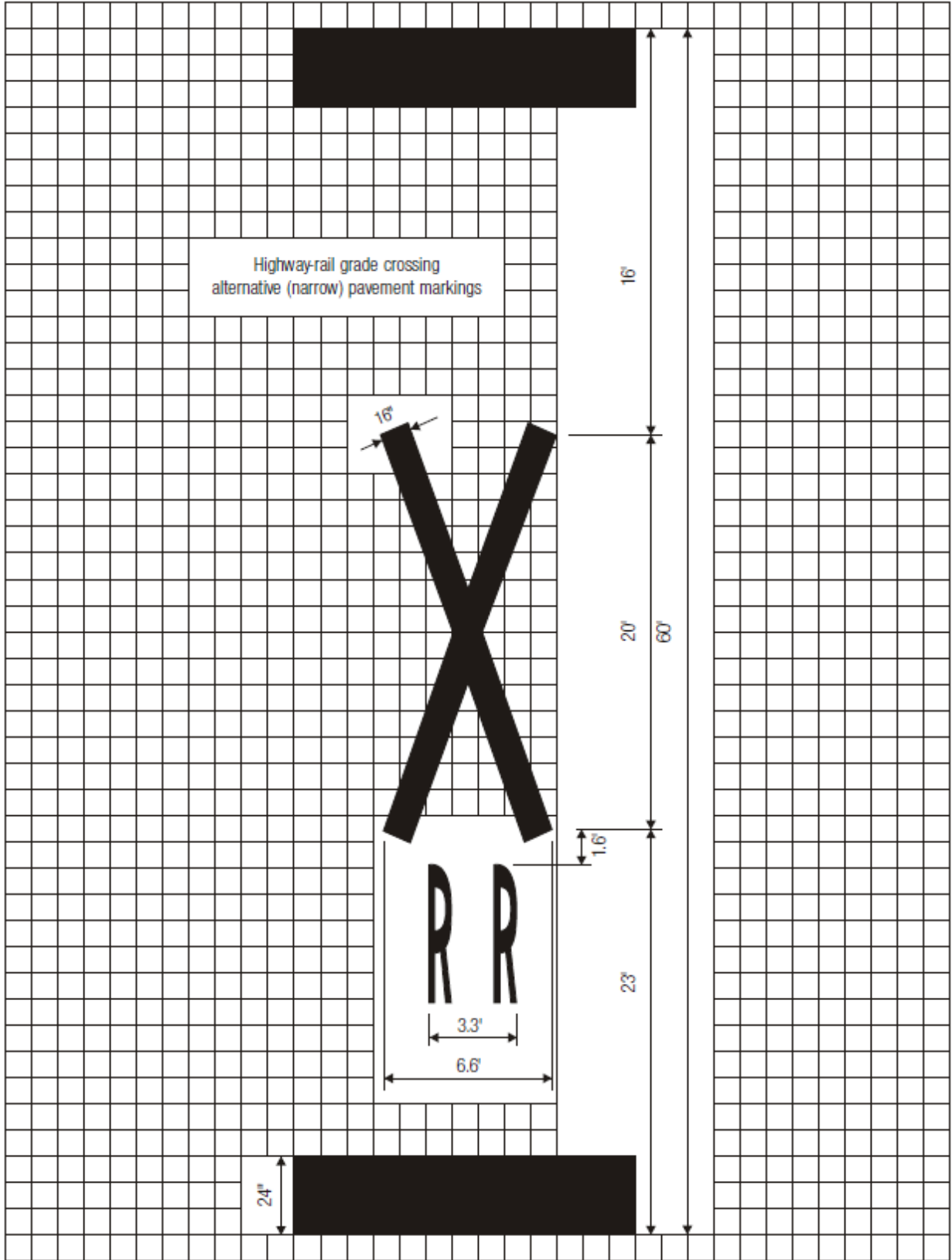


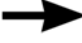
















PAVEMENT MARKING MATERIAL QUANTITIES			
8' Characters	Lineal Ft. (4")	Actual Sq. Ft.	Sq. Ft. To Report
A	17.00	5.67	6
C	16.00	5.33	5
D	19.00	6.33	6
E	19.00	6.33	6
F	18.33	6.11	6
G	19.32	6.44	6
H	19.32	6.44	6
I	8.31	2.77	3
L	12.33	4.11	4
N	18.66	6.22	6
O	18.69	6.23	6
P	17.64	5.88	6
R	21.00	7.00	7
S	19.32	6.44	6
T	12.33	4.11	4
U	18.00	6.00	6
X	15.66	5.22	5
Y	9.33	3.11	3
R (6')	15.75	5.25	5
SCHOOL	104.34	34.78	35
STOP	68.00	22.67	23
AHEAD	91.25	30.42	30
LEFT	62.00	20.67	21
RIGHT	80.28	26.76	27
TURN	70.00	23.33	23
ONLY	59.00	19.67	20
SIGNAL	95.00	31.67	32
X-ING	62.00	20.67	21
PED	55.64	18.55	19
	39.00	13.00	13
	48.00	16.00	16
	87.00	29.00	29
	126.19	42.06	42
	330.00	110.00	110
	195.39	65.13	65
	13.62	4.54	5