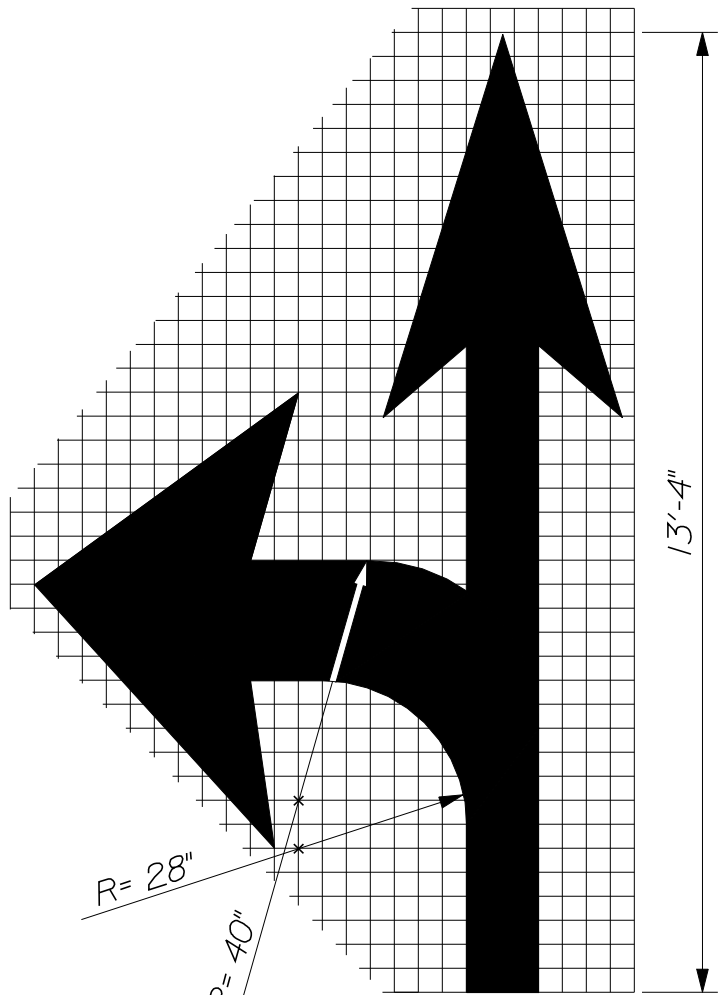
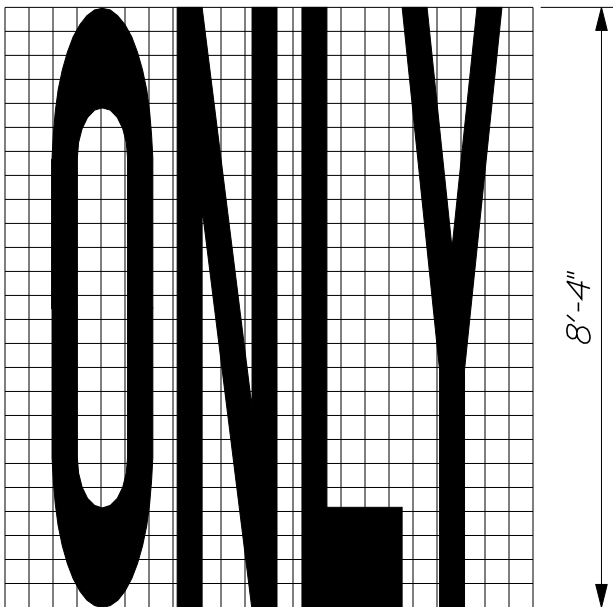


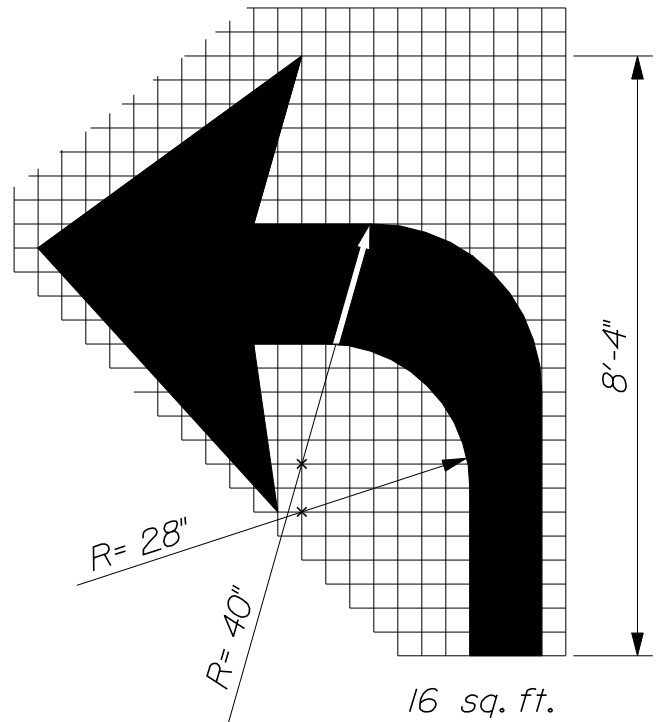
13 sq. ft.



29 sq. ft.



22 sq. ft.

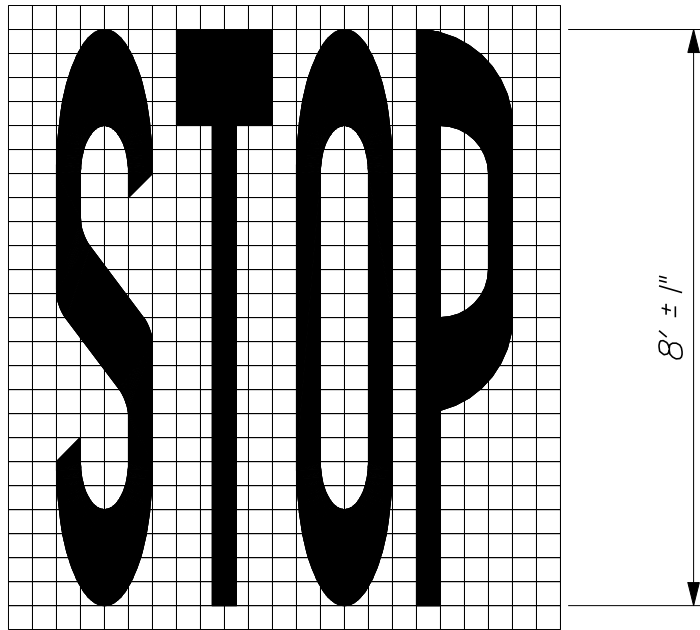


16 sq. ft.

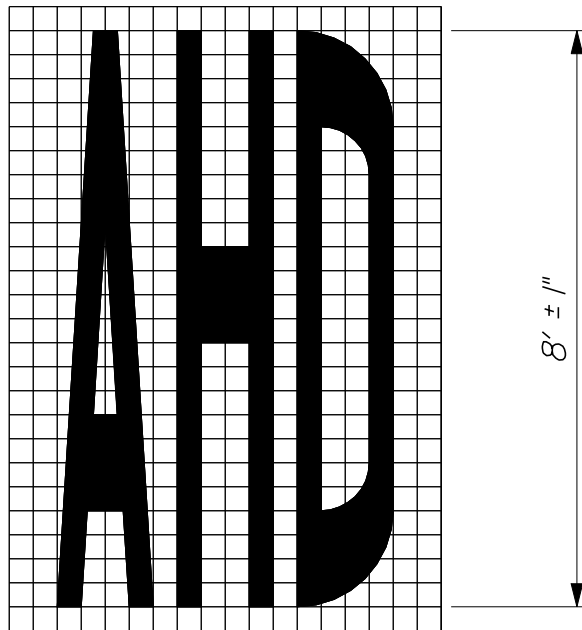
NOTE: See page 627(01) for general notes on pavement markings.

## PAVEMENT MARKING

Straight Arrow, Straight/Left Arrow, Left Arrow, & ONLY  
627(02)A



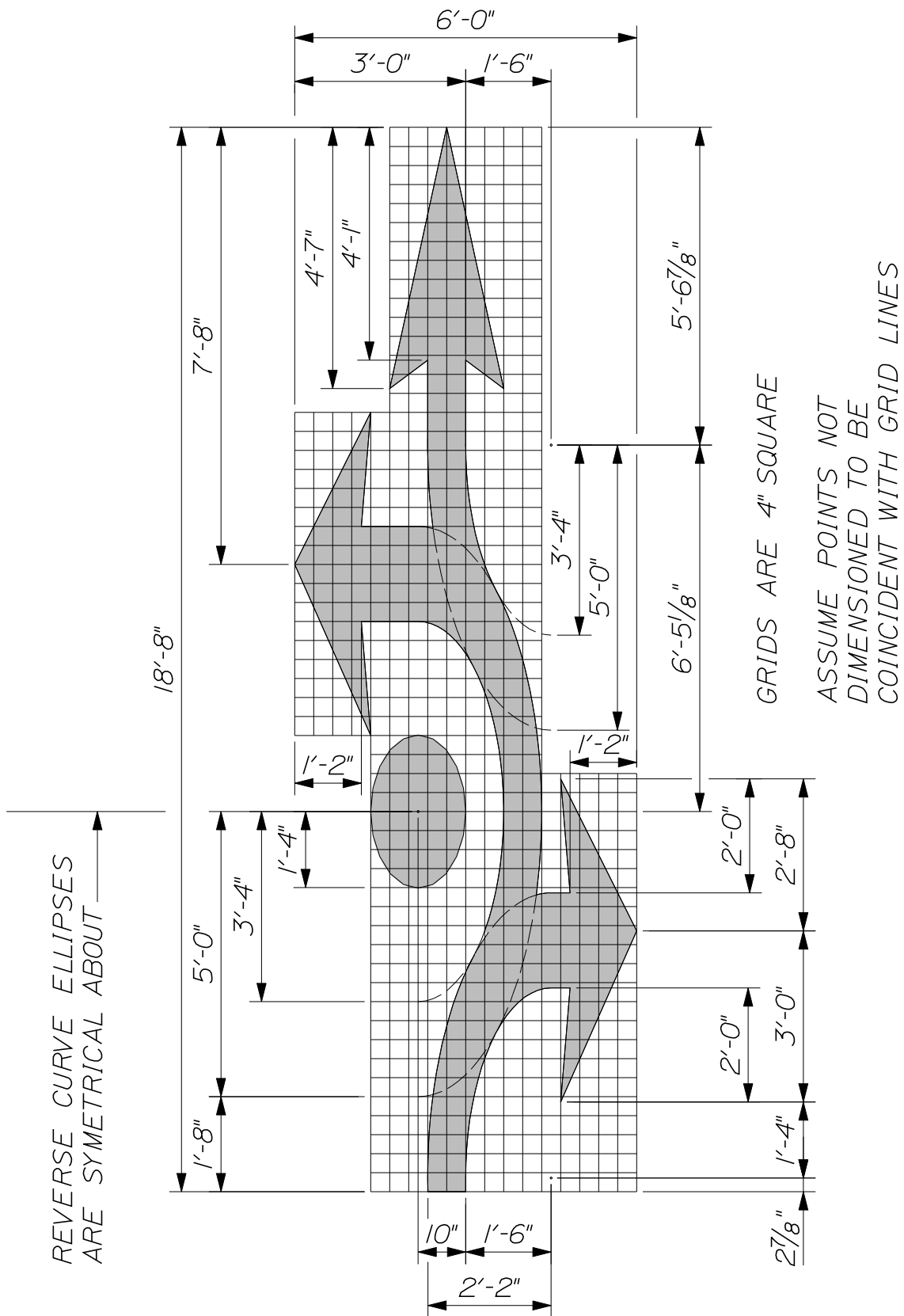
22 sq. ft.



16 sq. ft.

*NOTE: See page 627(01) for general notes on pavement markings.*

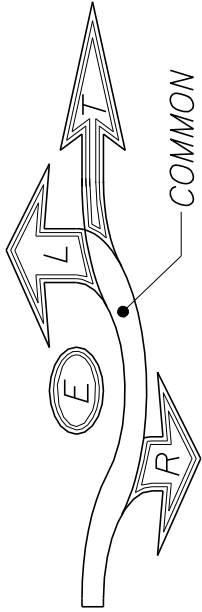
**PAVEMENT MARKING**  
**STOP & AHEAD**  
**627(02)B**



~ DETAIL ~

NOTE: See page 627(01) for general notes on pavement markings.

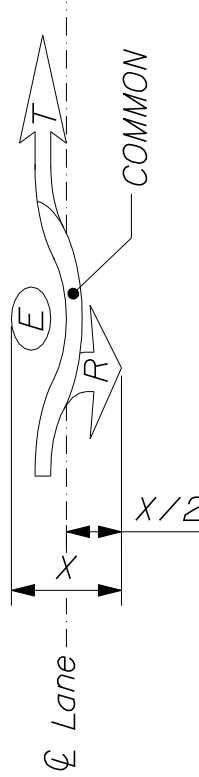
PAVEMENT MARKING  
 Roundabout Arrows  
 627(02)C



~ COMPONENT KEY ~

The labelled areas above correspond to the portions needed for each type of roundabout traffic arrows.

For example: the roundabout traffic arrow type *tr* requires the "common", "T", "R", and "E" areas.



Center the arrow on the lane centerline between the lateral extremities of that arrow type.



Type LTE



Type TE



Type LE



Type T



Type LTRE



Type TRE



Type LTR



Type TR



Type LT

~ ROUNDABOUT PAVEMENT MARKING ARROWS ~

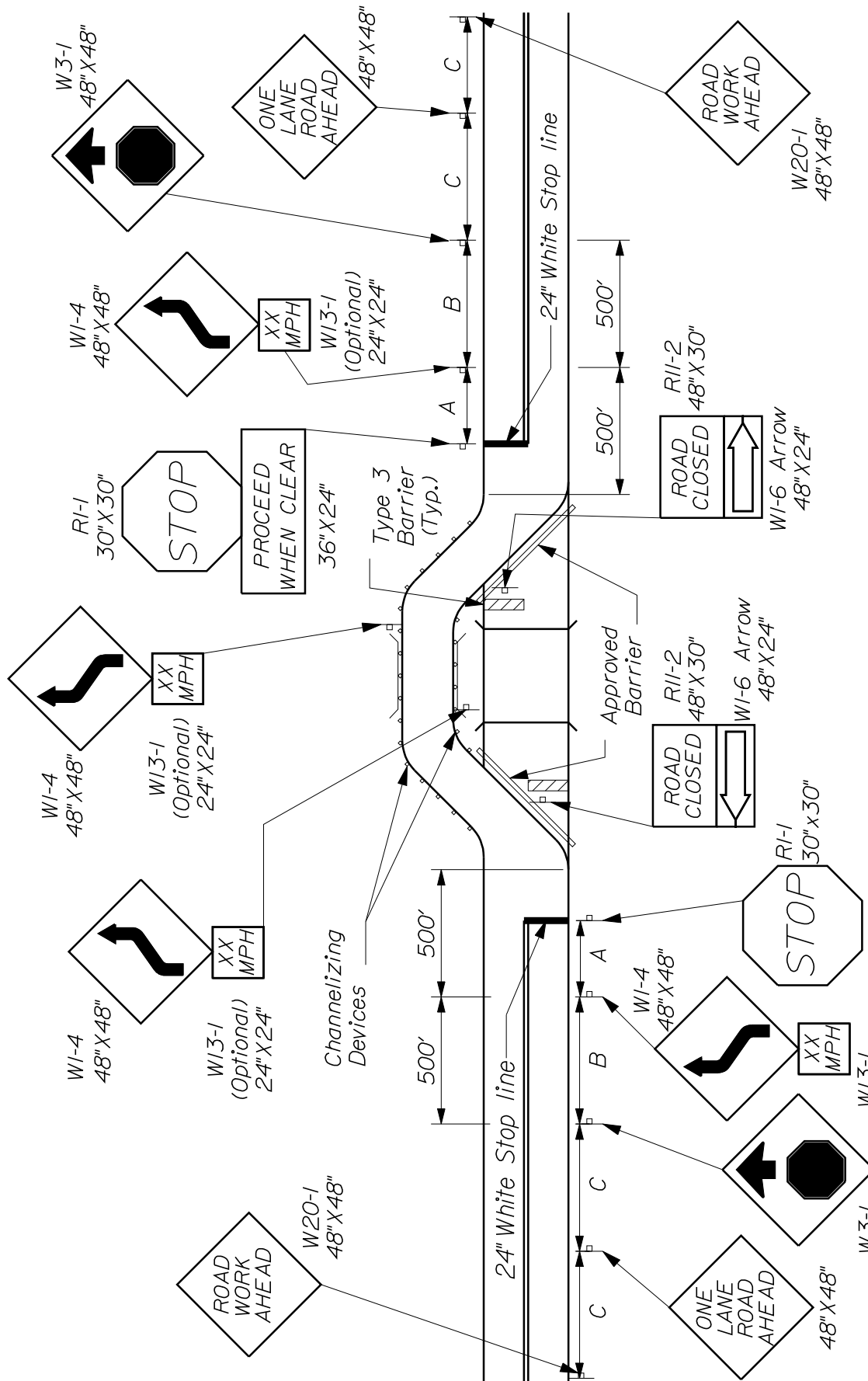
NOTE: See page 627(01) for general notes on pavement markings.

# PAVEMENT MARKING

Roundabout Arrows

627(02)D





- NOTES:**
1. Approach signing and end road work signs are required if this work is the construction project.
  2. If the tangent distance along the temporary diversion is less than 600 feet, a double reverse curve sign (W24-1) may be used in place of the reverse curve sign (W1-4).
  3. Barrier placement shall be in accordance with the current edition of the AASHTO Roadside Design Guide.
  4. Terminate the Barrier ends outside the clear zone or protect the ends with an impact attenuator.
  5. For A, B, C, Distances see page 652(15).
  6. Remove Centerline markings between Stop Lines.

ROAD CLOSURE WITH ONE LANE DIVERSION

LOW VOLUME ROAD WITH ADEQUATE SIGHT DISTANCE